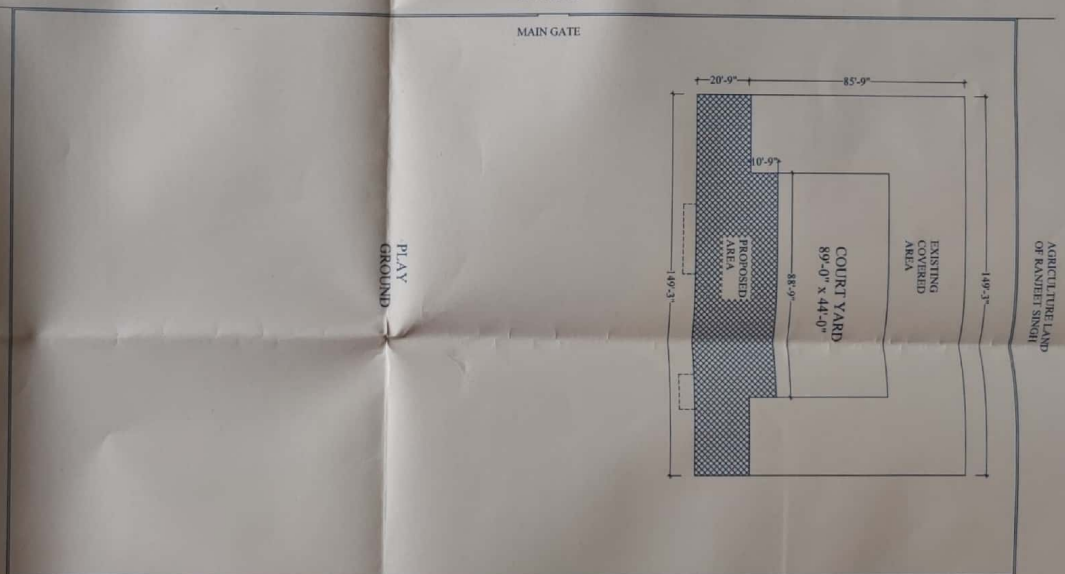


MAIN ROAD
MAIN GATE



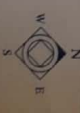
LAYOUT PLAN

AGRICULTURE LAND

PROJECT:
PROPOSED THE SCHOOL BUILDING FOR SAINT VIVEKANAND SENIOR SECONDARY SCHOOL SITUATED AT KESU PURA, TEHSIL, ELLENABAD, DISTT. SIRSA

SCALE 1:1000

NO.	DESCRIPTION	AREA (SQ. FT.)
01	COVERED AREA ON GROUND FLOOR	1177.77 SQ. FT.
02	EXISTING COVERED AREA ON GROUND FLOOR	1877.77 SQ. FT.
03	EXISTING COVERED AREA ON FIRST FLOOR	1877.77 SQ. FT.
04	COVERED AREA ON F.L.	1177.77 SQ. FT.
05	COVERED AREA ON F.L.	1877.77 SQ. FT.
06	COVERED AREA ON F.L.	1877.77 SQ. FT.
07	COVERED AREA ON F.L.	1877.77 SQ. FT.
08	COVERED AREA ON F.L.	1877.77 SQ. FT.
09	COVERED AREA ON F.L.	1877.77 SQ. FT.
10	COVERED AREA ON F.L.	1877.77 SQ. FT.
11	COVERED AREA ON F.L.	1877.77 SQ. FT.
12	COVERED AREA ON F.L.	1877.77 SQ. FT.
13	COVERED AREA ON F.L.	1877.77 SQ. FT.
14	COVERED AREA ON F.L.	1877.77 SQ. FT.
15	COVERED AREA ON F.L.	1877.77 SQ. FT.
16	COVERED AREA ON F.L.	1877.77 SQ. FT.
17	COVERED AREA ON F.L.	1877.77 SQ. FT.
18	COVERED AREA ON F.L.	1877.77 SQ. FT.
19	COVERED AREA ON F.L.	1877.77 SQ. FT.
20	COVERED AREA ON F.L.	1877.77 SQ. FT.
21	COVERED AREA ON F.L.	1877.77 SQ. FT.
22	COVERED AREA ON F.L.	1877.77 SQ. FT.
23	COVERED AREA ON F.L.	1877.77 SQ. FT.
24	COVERED AREA ON F.L.	1877.77 SQ. FT.
25	COVERED AREA ON F.L.	1877.77 SQ. FT.
26	COVERED AREA ON F.L.	1877.77 SQ. FT.
27	COVERED AREA ON F.L.	1877.77 SQ. FT.
28	COVERED AREA ON F.L.	1877.77 SQ. FT.
29	COVERED AREA ON F.L.	1877.77 SQ. FT.
30	COVERED AREA ON F.L.	1877.77 SQ. FT.
31	COVERED AREA ON F.L.	1877.77 SQ. FT.
32	COVERED AREA ON F.L.	1877.77 SQ. FT.
33	COVERED AREA ON F.L.	1877.77 SQ. FT.
34	COVERED AREA ON F.L.	1877.77 SQ. FT.
35	COVERED AREA ON F.L.	1877.77 SQ. FT.
36	COVERED AREA ON F.L.	1877.77 SQ. FT.
37	COVERED AREA ON F.L.	1877.77 SQ. FT.
38	COVERED AREA ON F.L.	1877.77 SQ. FT.
39	COVERED AREA ON F.L.	1877.77 SQ. FT.
40	COVERED AREA ON F.L.	1877.77 SQ. FT.
41	COVERED AREA ON F.L.	1877.77 SQ. FT.
42	COVERED AREA ON F.L.	1877.77 SQ. FT.
43	COVERED AREA ON F.L.	1877.77 SQ. FT.
44	COVERED AREA ON F.L.	1877.77 SQ. FT.
45	COVERED AREA ON F.L.	1877.77 SQ. FT.
46	COVERED AREA ON F.L.	1877.77 SQ. FT.
47	COVERED AREA ON F.L.	1877.77 SQ. FT.
48	COVERED AREA ON F.L.	1877.77 SQ. FT.
49	COVERED AREA ON F.L.	1877.77 SQ. FT.
50	COVERED AREA ON F.L.	1877.77 SQ. FT.
51	COVERED AREA ON F.L.	1877.77 SQ. FT.
52	COVERED AREA ON F.L.	1877.77 SQ. FT.
53	COVERED AREA ON F.L.	1877.77 SQ. FT.
54	COVERED AREA ON F.L.	1877.77 SQ. FT.
55	COVERED AREA ON F.L.	1877.77 SQ. FT.
56	COVERED AREA ON F.L.	1877.77 SQ. FT.
57	COVERED AREA ON F.L.	1877.77 SQ. FT.
58	COVERED AREA ON F.L.	1877.77 SQ. FT.
59	COVERED AREA ON F.L.	1877.77 SQ. FT.
60	COVERED AREA ON F.L.	1877.77 SQ. FT.
61	COVERED AREA ON F.L.	1877.77 SQ. FT.
62	COVERED AREA ON F.L.	1877.77 SQ. FT.
63	COVERED AREA ON F.L.	1877.77 SQ. FT.
64	COVERED AREA ON F.L.	1877.77 SQ. FT.
65	COVERED AREA ON F.L.	1877.77 SQ. FT.
66	COVERED AREA ON F.L.	1877.77 SQ. FT.
67	COVERED AREA ON F.L.	1877.77 SQ. FT.
68	COVERED AREA ON F.L.	1877.77 SQ. FT.
69	COVERED AREA ON F.L.	1877.77 SQ. FT.
70	COVERED AREA ON F.L.	1877.77 SQ. FT.
71	COVERED AREA ON F.L.	1877.77 SQ. FT.
72	COVERED AREA ON F.L.	1877.77 SQ. FT.
73	COVERED AREA ON F.L.	1877.77 SQ. FT.
74	COVERED AREA ON F.L.	1877.77 SQ. FT.
75	COVERED AREA ON F.L.	1877.77 SQ. FT.
76	COVERED AREA ON F.L.	1877.77 SQ. FT.
77	COVERED AREA ON F.L.	1877.77 SQ. FT.
78	COVERED AREA ON F.L.	1877.77 SQ. FT.
79	COVERED AREA ON F.L.	1877.77 SQ. FT.
80	COVERED AREA ON F.L.	1877.77 SQ. FT.
81	COVERED AREA ON F.L.	1877.77 SQ. FT.
82	COVERED AREA ON F.L.	1877.77 SQ. FT.
83	COVERED AREA ON F.L.	1877.77 SQ. FT.
84	COVERED AREA ON F.L.	1877.77 SQ. FT.
85	COVERED AREA ON F.L.	1877.77 SQ. FT.
86	COVERED AREA ON F.L.	1877.77 SQ. FT.
87	COVERED AREA ON F.L.	1877.77 SQ. FT.
88	COVERED AREA ON F.L.	1877.77 SQ. FT.
89	COVERED AREA ON F.L.	1877.77 SQ. FT.
90	COVERED AREA ON F.L.	1877.77 SQ. FT.
91	COVERED AREA ON F.L.	1877.77 SQ. FT.
92	COVERED AREA ON F.L.	1877.77 SQ. FT.
93	COVERED AREA ON F.L.	1877.77 SQ. FT.
94	COVERED AREA ON F.L.	1877.77 SQ. FT.
95	COVERED AREA ON F.L.	1877.77 SQ. FT.
96	COVERED AREA ON F.L.	1877.77 SQ. FT.
97	COVERED AREA ON F.L.	1877.77 SQ. FT.
98	COVERED AREA ON F.L.	1877.77 SQ. FT.
99	COVERED AREA ON F.L.	1877.77 SQ. FT.
100	COVERED AREA ON F.L.	1877.77 SQ. FT.



APPROVED BY: **Dr. Anil Kumar Singh**
President, Sikh Education Society
Sant Vivekanand Edu. Society
KESU PURA (SIRSA)

PROJECT :-

PROPOSED THE SCHOOL BUILDING FOR SAINT VIVEKANAND SENIOR SECONDARY SCHOOL SITUATED AT KESU PURA, TEHSIL ELLENABAD, DISTT. SIRSA

AREA STATEMENT :- SCALE : 1:100

TOTAL AREA OF LAND (220'-0" X 396'-0") = 87120'-0" Sq. Ft.
 OR = 9680 SQ. YARDS
 OR = 2.0 ACRES

1. COVERED AREA ON G.F.L. + F.F.L.:

Existing Covered Area on Ground Floor = 7827'-1 1/2" Sq. Ft.
 Existing Covered Area on First Floor = 7827'-1 1/2" Sq. Ft.

2. PROPOSED COVERED AREA ON G.F.L. + F.F.L.:

* Coud. Area on G.F.L. = (88'-9" X 10'-9") + (149'-3" X 20'-9")
 = 954'- 1/2" + 3096'-11" = 4051'-0" Sq. Ft.
 * Coud. Area on G.F.L. = (88'-9" X 10'-9") + (149'-3" X 20'-9")
 = 954'- 1/2" + 3096'-11" = 4051'-0" SQ. FT.
 TOTAL COVD. AREA = G.F.L. + F.F.L. = 4051'-0" + 4051'-0" =
 = 8102'-0" Sq. Ft.

SCHEDULED OF JOINERY :

- D = 5'-0" X 8'-6"
- D1 = 10'-0" X 8'-6"
- D2 = 4'-0" X 8'-6"
- D3 = 3'-6" X 8'-6"
- D4 = 2'-6" X 8'-6"

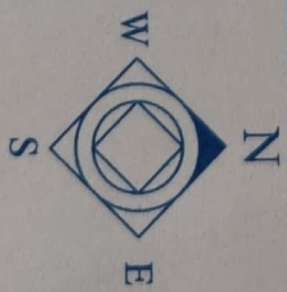
- W1 = 5'-0" X 6'-6"
- W2 = 3'-6" X 6'-6"
- V = 3'-6" X 5'-0"

PUBLIC HEALTH NOTICE

1. W.C. BLOCK ROOF ARE SUNKEN BY 0.45 M. IN CASE OF INDIAN W.C. FOR FUTURE COST
2. OWNER CAN USE INDIAN OR EUROPEAN W.C. AT THIS OWN DISCRPTION.
3. THE VENT PIPE SHALL BE TAKEN UP TO P.WALL ONLY COOL WILL PROJECT AND ABOVE P.WALL

NOTE :-

- ALL DIMENSIONS IN METRE
- BOUNDARY WALL & GATE AS PER STD. DESIGN
- JOINING AS PER JOINING PLAN.

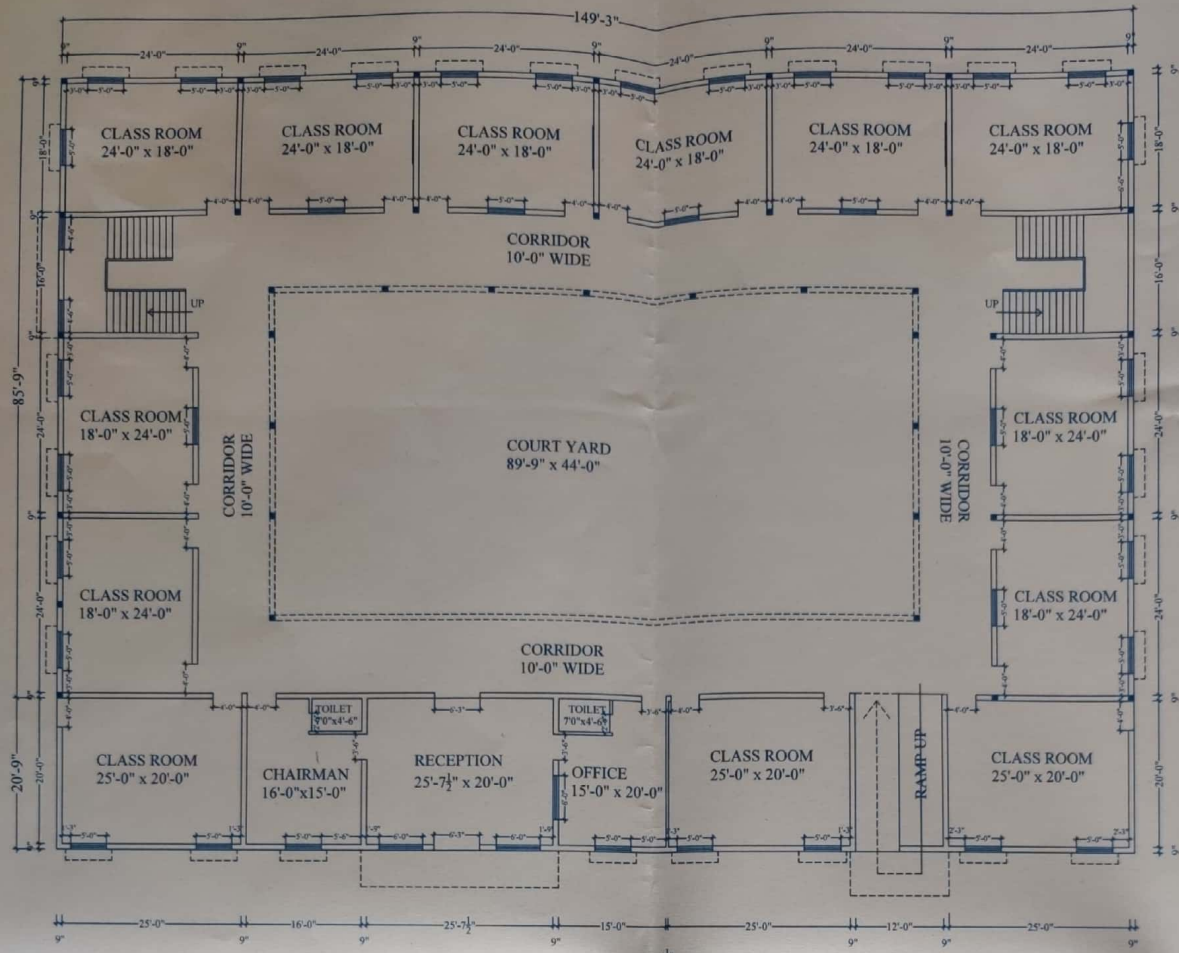


OWNER'S SIGNATURE

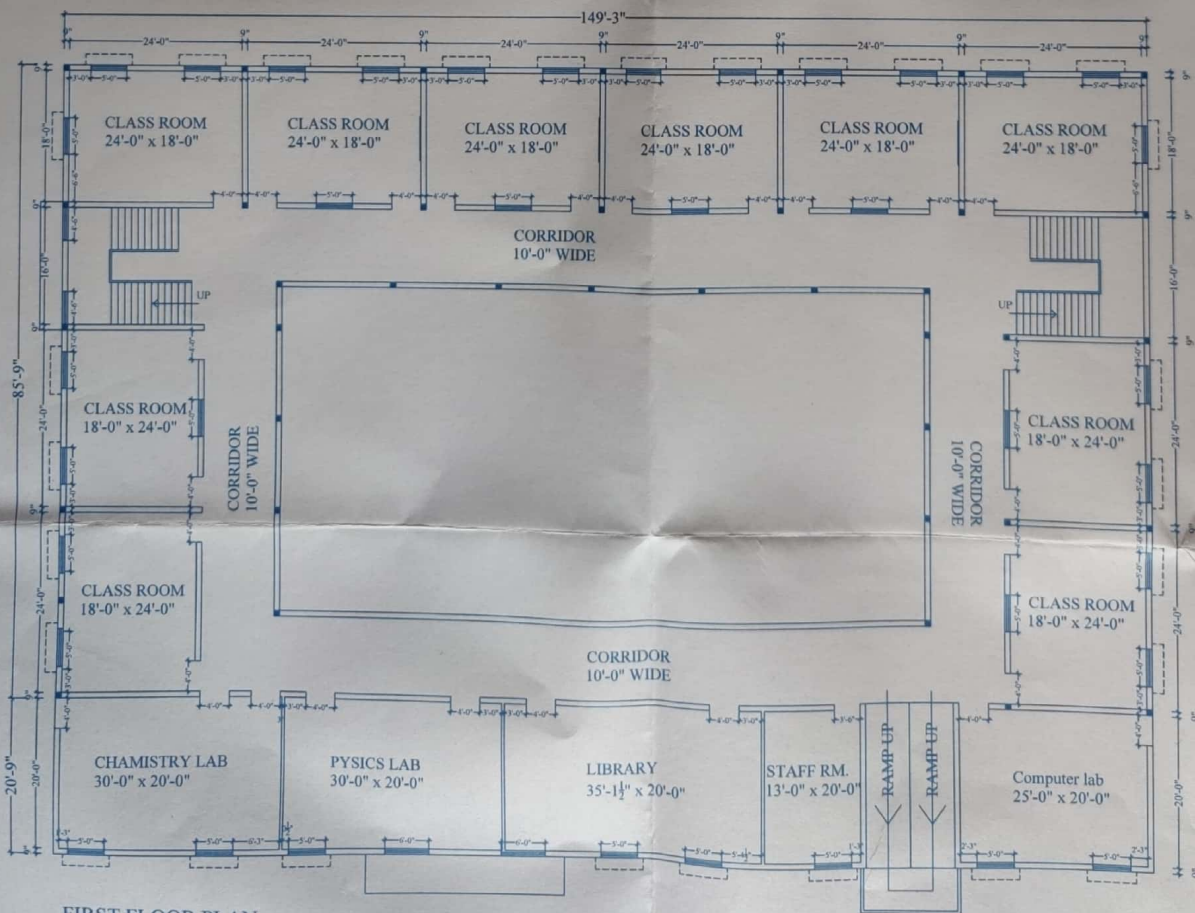
President *Baljinder Singh*
 Sant Vivekanand Edu. Society
 KESUPURA (Sirsa)

ARCHITECT'S SIGNATURE

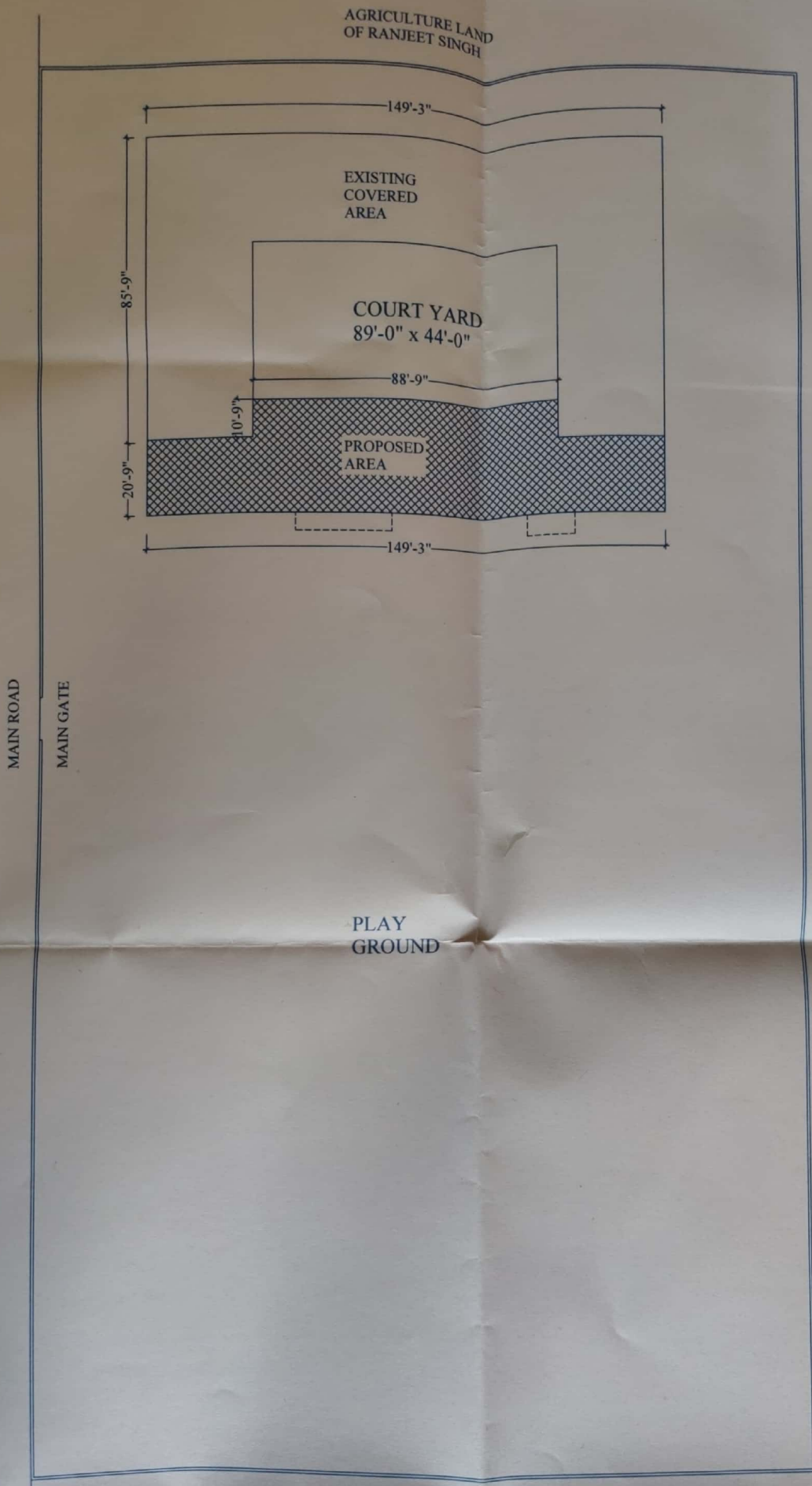
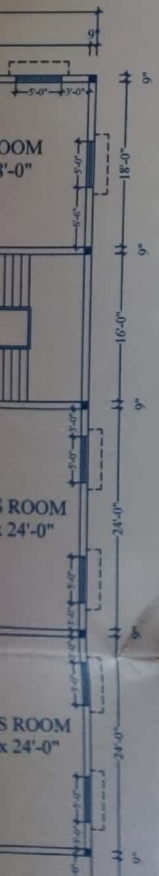
DESIGN NET CONSULTANT
AR. AJAY DEEP SINGH
 HOORAS-REGA-444/21-22
 M.98124-42662



GROUND FLOOR PLAN



FIRST FLOOR PLAN



LAY OUT PLAN

AGRICULTURE LAND OF RANJEET SINGH

AGRICULTURE LAND

PROJECT :-
**PROPOSED THE SC
 SECONDARY SCH
 SITUATED AT KES**

AREA STATEMENT :- SCALE :-

TOTAL AREA OF LAND (220'-0"x396'-0')
 OR
 OR

1. COVERED AREA ON G.F.L + F.F.L.:

Existing Covered Area on Ground Floor
 Existing Covered Area on First Floor

2. PROPOSED COVERED AREA ON G.F.L.

* Coved. Area on G.F.L. = (88'-9"x10'-9"
 = 954'- $\frac{3}{4}$ " + 3096'
 * Coved. Area on G.F.L. = (88'-9"x10'-9"